

# Plaza Diamond Bar

OFFICE, MEDICAL, RETAIL

1900 – 2040 S. Brea Canyon Road, Diamond Bar, CA



TAYLOR ING  
LIC.#00895164  
909.942.4680

[taylor.ing@cushwake.com](mailto:taylor.ing@cushwake.com)

DREW SANDEN  
LIC#01802318  
909.942.4685

[drew.sanden@Cushwake.com](mailto:drew.sanden@Cushwake.com)

SCOTT MAPLES  
LIC#01941380  
909.942.4683

[scott.maples@cushwake.com](mailto:scott.maples@cushwake.com)



**CUSHMAN &  
WAKEFIELD®**



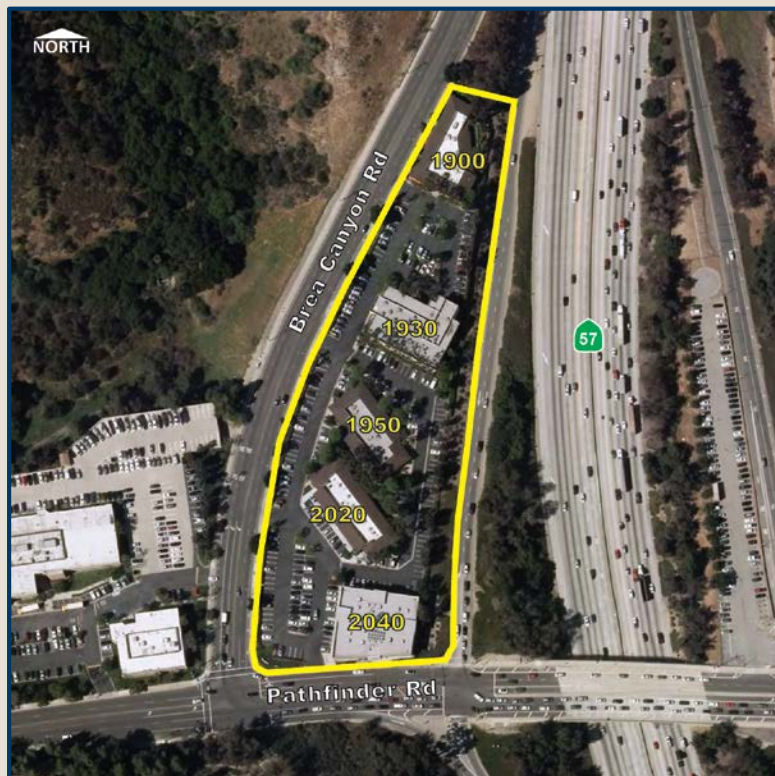
# Plaza Diamond Bar

1900 – 2040 S. Brea Canyon Road, Diamond Bar, CA

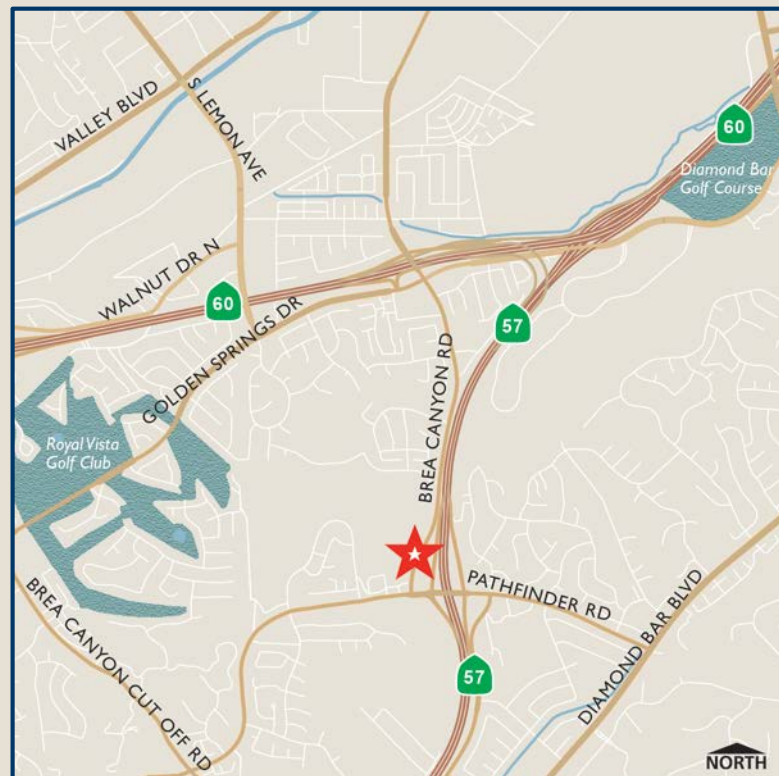
## AVAILABILITY

BUILDING	SUITE	SIZE
1900 S. Brea Canyon	Entire Building	±9,153 SF
1930 S. Brea Canyon	150	±831 SF
2040 S. Brea Canyon	100	±6,354 SF Divisible to ±1,621 SF
2040 S. Brea Canyon	230	±3,077 SF

AERIAL MAP



LOCATOR MAP



TAYLOR ING  
LIC.#00895164  
909.942.4680

[taylor.ing@cushwake.com](mailto:taylor.ing@cushwake.com)

DREW SANDEN  
LIC#01802318  
909.942.4685

[drew.sanden@Cushwake.com](mailto:drew.sanden@Cushwake.com)

SCOTT MAPLES  
LIC#01941380  
909.942.4683

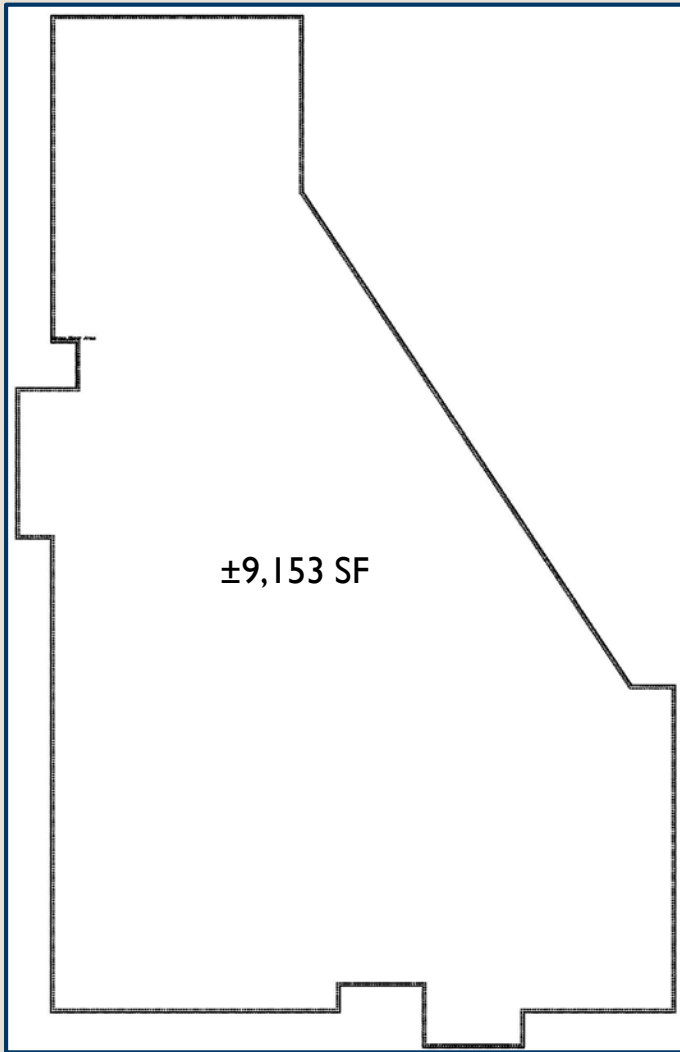
[scott.maples@cushwake.com](mailto:scott.maples@cushwake.com)



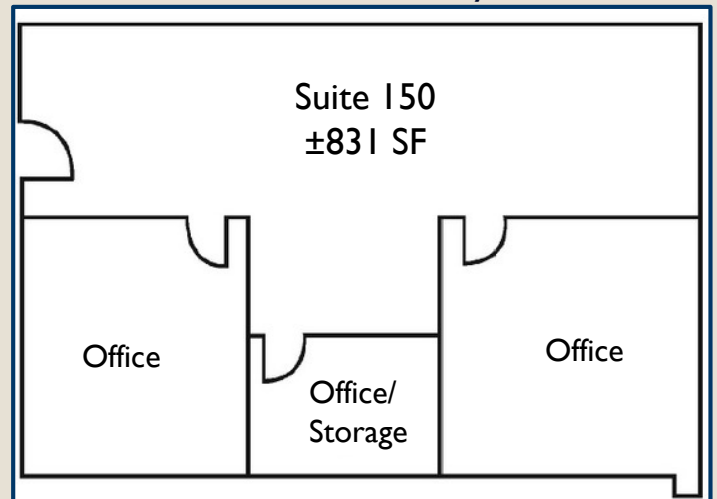
# Plaza Diamond Bar

1900 – 2040 S. Brea Canyon Road, Diamond Bar, CA

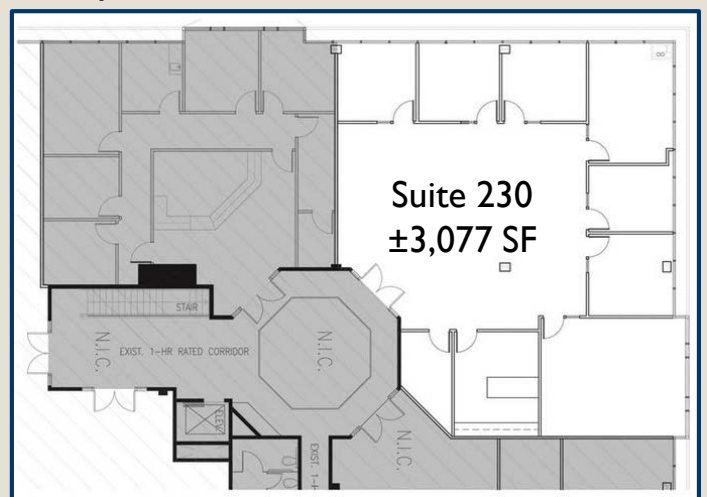
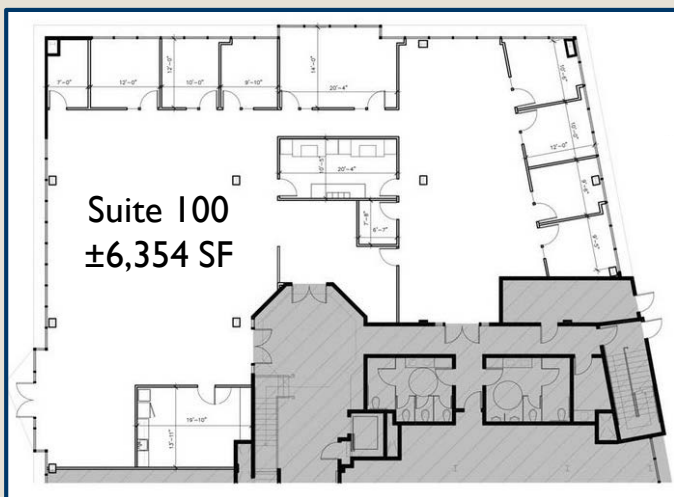
1900 S. Brea Canyon



1930 S. Brea Canyon



2040 S. Brea Canyon



TAYLOR ING  
LIC.#00895164  
909.942.4680

[taylor.ing@cushwake.com](mailto:taylor.ing@cushwake.com)

DREW SANDEN  
LIC#01802318  
909.942.4685

[drew.sanden@Cushwake.com](mailto:drew.sanden@Cushwake.com)

SCOTT MAPLES  
LIC#01941380  
909.942.4683

[scott.maples@cushwake.com](mailto:scott.maples@cushwake.com)



**CUSHMAN & WAKEFIELD®**



# Plaza Diamond Bar

1900 – 2040 S. Brea Canyon Road, Diamond Bar, CA



TAYLOR ING  
LIC.#00895164  
909.942.4680

[taylor.ing@cushwake.com](mailto:taylor.ing@cushwake.com)

DREW SANDEN  
LIC#01802318  
909.942.4685

[drew.sanden@Cushwake.com](mailto:drew.sanden@Cushwake.com)

SCOTT MAPLES  
LIC#01941380  
909.942.4683

[scott.maples@cushwake.com](mailto:scott.maples@cushwake.com)



**CUSHMAN & WAKEFIELD®**